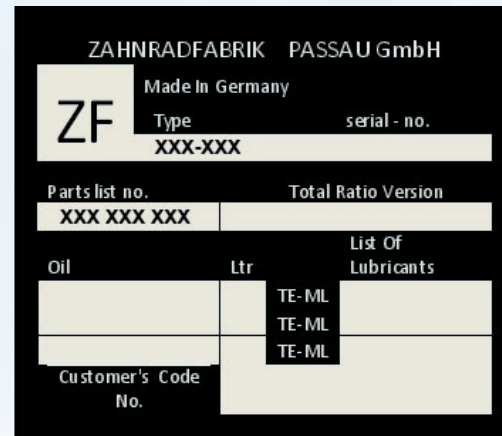


ZF Transmission & Torque Converter Remanufacturing

Zahnradfabrik transmissions and torque converters, better known as “ZF”, can be found in some of the world’s most recognized and relied upon brands of industrial equipment, such as:

Allis Chalmers	Case	Caterpillar	Daewoo	Demag
Fiat Allis	FMC	Ford	Hyster	Hyundai
Ingersoll Rand	JCB	John Deere	Kalmar	Koehring
Komatsu	Liebherr	Linkbelt	Lull	Moxy
P&H	Samsung	SkyTrak	Terex	Volvo

If you have a ZF transmission failure or just feel your transmission needs to be brought back to life, contact Joseph Industries. High demand for our popular remanufacture & return (R&R) service for ZF transmissions and torque converters has made it a very appealing alternative to locating and purchasing new units. Prior to removing your transmission, the R&R process can begin when you provide us with the TYPE/SERIAL NO. and PARTS LIST NO. found on your ZF transmission tag*.



* Transmission tag is normally located at the bottom of the transmission housing on the engine side

With this information we will provide an initial quote in which we offer to:

- Completely disassemble your transmission
- Remove and discard all normal wear parts such as bearings, clutch discs, springs, thrust washers and sealing items
- Industrially clean and perform individual specific inspections of each remaining hard part component, such as the case, control valve, pump, gears, shafts, clutch drums, etc. to insure they meet necessary criteria for reuse. Any hard part component found to be unacceptable after inspection will at this point be quoted to you as an additional cost to the initial quote.

If you decide to send us your transmission core for R&R, we would complete the steps listed above and would then present you with a final post inspection price that will include the additional costs of any hard part components that would be needed to remanufacture your transmission back to original OE specifications. This would be accomplished in approximately 2 days after we receive your core. **At that time, we would await your approval to proceed further.**

Only upon your approval of the final post inspection price do we reassemble your transmission and test it. Once testing is complete, your transmission is painted so the “just like new” outside matches the “just like new” insides. On average, 5-9 days after you approve R&R, your transmission is ready to be shipped back to you and it will now have a 12 month, unlimited hour warranty with leaks being covered for 90 days.

Contact Joseph Today!